



Mentored Coaching Groups

Encounter Jesus, laugh, cry, learn, grow, ask,
celebrate, share, sing, challenge, wonder,
praise, transform, love and practice ...

Together!



Nancy Lopez,

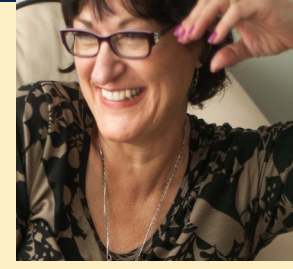
Kathy Ielapi

Gretchen Donahue

Dr. Patty Sadallah

Nicole Montelanico

What Members had to say...



"God speaks to each of us in such unique ways. What He says to one of us really blesses all of us." ~ Michele McLaughlin

"Spending time with Jesus and then sharing those encountering experiences with the group brings some of the most powerful revelation." ~Kathy Ielapi

"We are learning and growing together, and that's a rare and powerful thing."~ Nicole Montelanico

"Miracles, healings, signs and wonders are commonplace. Each week we are amazed at what God is doing in and through each of us!" ~Nancy Lopez

"I can honestly say that my relationship with Jesus has catapulted since I learned how to discern God's voice at Christian Leadership University." ~Dr. Patty Sadallah

"Practicing what we learn from a class gives me more confidence to speak about God in the world. I feel unconditional acceptance being part of a community. I love that everyone contributes." ~Gretchen Donahue

"I love learning tidbits from what people are learning in other classes. It makes me want to take those classes too. I love continually learning and deepening my relationship with Jesus day by day. ~ Jeanette Chamberlin

Spirit Life Circles Membership FAQ's

Who is this ideal for? It is for those who are hungry to grow closer to God and practice and exercise the gifts of the Spirit in a safe and loving community. Additionally it's for those who feel isolated in their Christian walk and would like to be challenged and encouraged to go deeper in Christ and fulfill their Kingdom destinies.

What are the benefits? Everyone contributes what they are learning from God from a variety of sources and all are practicing and sharing dialogue journaling each week. God's voice is multiplied around the circle and people are enlightened, encouraged, restored, strengthened, and loved so they may gain the courage to reflect God's love in their circles of influence in their everyday lives.

Which circle is right for me? Mentor Coaches are leading groups all around the world online and when possible, face-to-face. There are three types of circles:

- ◆ **Foundational Circles** - Those who need to learn the skill of Dialogue Journaling would take the CLU School of the Spirit *How to Hear God's Voice* class as journaling is foundational to the Spirit Life Circle experience. Once this skill is mastered members can move to other circle groups. For those who already have completed this class, this choice is not necessary as a first circle.
- ◆ **Integrated Circles** - Participants can be taking classes from CLU or School of the Spirit, or self studying books of their own choice and share what they are learning from God from a variety of different sources each week. The cross pollination generates amazing growth and interest in ongoing spiritual growth.
- ◆ **Focus Circles** - Participants who would like to focus their circle learning in an area of life or an issue can benefit from the focus of a specific area. The synergy of teaming up to master a skill allows members to achieve their goals or victory much quicker.

When and how do we meet? Online circle meetings are conducted on freeconferencecall.com, Your Mentor will meet with you using this technology to answer your specific questions and show you how it works before joining your first circle. Meetings are between 1.5 and 2 hours per week.

What does it cost? The investment is \$39. per month automatically withdrawn from a credit or debit withdrawal. That's just \$1.30 per day!

What is my next step? Review more information and specifically the Mentor Profiles on <https://www.cwgministries.org/spirit-life-circles-explained> Reach out to the Mentor of your choice and they will share the days, times, and circle type options. When you are ready to join, your Mentor will give you a link for registration. If you have other questions contact Team Leader Dr. Patty Sadallah 216-230-7552
Patty@PattySadallah.com

Are you hungry to grow deeper in Christ? Do you wish you knew *how* and had a community of believers to help show you the way?



Companionship - Revelation - Transformation